



- ✓ Batches tailored to small series production
- ✓ Continuous innovation to reduce delivery dates
- ✓ Rapid response to demand
- ✓ Quotes of large drawings packages
- ✓ Prompt response to request
- ✓ Processing CAD / CAM drawings
- ✓ The interim and final quality control
- ✓ 3D measuring device WENZEL-X orbit 1500
- ✓ Predictive and preventive machine maintenance
- ✓ Usage of comprehensive manufacturing software
- ✓ Material flow management
- ✓ Capacity planning
- ✓ ISO 9001:2009

# BOST production

Complex and flexible



## We are flexible!

“The ability to react on changes is called FLEXIBILITY”

1. We react promptly on customer demands
2. We are ready for the low volume of production batches
3. Quick delivery time is granted

## We deliver complexly!

Simply, we deliver the product incl. all the additional services/treatments.

I.e.: operations like grinding, hardening, special surface treatments, assembly and required packaging are a part of complete delivery.

“Jedinou konštantou je neustála zmena.”



# BOST : Customer Oriented Production

Production system tailored to piece and small customer-oriented production

### Quick reaction on RFQs

We quote large documentation packages! Normally we respond within 2-3 business days. At that time we quote a few selected items. If the price is acceptable, we process the entire entry and submit it to the agreed time.

### Prompt order-reaction

Already during the quote we calculate with machine capacity planning and in some cases we book some capacity for a customer. Therefore, after the acceptance of the quote we can start the production more flexibly and dispatch the goods.

### Material flow management

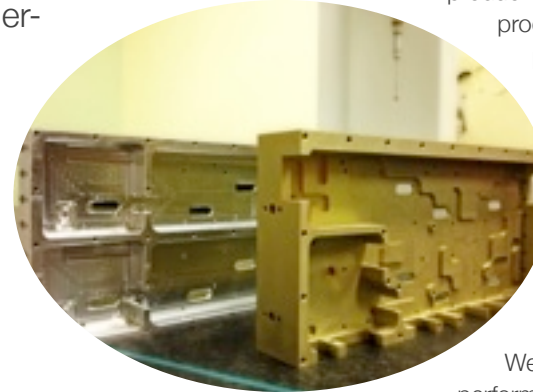
We monitor material flow in the Production area flow via bar-code based information system.

Any material that enters the Production is immediately marked with special codes, we monitor its flow and processing, including waste and dissonants.

### Quality control

We provide quality control throughout the manufacturing process continuously. Starting with the acceptance of materials, processing steps upto final shipment.

Any non-compliant products are labeled, separated from the rest of the production and analyzed.



Internal non-compliant products we deal in software production system. External non-compliant products are dealt via the complaints procedure 8D report.

Quality control department is excellently equipped. For example with 3D measuring device Wenzel, roughness, altimeter, etc. All equipment is certified, faculty of the gauges is evaluated using Cgk.

### Effectivity and rewards

We analyze and measure processes, their performance and effectivity. We use SPC, CPK, Cmk, PPM,...

Employees are remunerated on a piecework basis and bear the responsibility for their work and product.

### Subsuppliers

We evaluate our subsuppliers and companies we work with on a regular basis from the point of view of quality and delivery dates achieved.



# Major equipment, development, reference

Vladimir Bielik stood as a researcher and a PLC programmer at the birth of the first CNC machines in Slovakia in the 80s. Later he was at the beginning BOST CNC machining in Slovakia in the '90s, when we installed the first CNC lathes with Fanuc control system. For over 10 years our team of application engineers and technologists supported many of the Slovak manufacturing companies in establishing productive manufacture. From 2006 to 2009, we have invested nearly 2 million. € in technology and equipment. In 2013 we plan an investment of 700 thousand. € in 5-axis machining.

## Main milestones in the Division history:

### 90's - today

customer support, technology, CNC trainings

### Year 2006

the birth of the Production Division and the acquisition of the first 5 machines: 3 CNC lathes and 2 VMC's

### Year 2008

purchase of the 3 CNC lathes

### Year 2009

purchase of the 3 VMC's, 2 CNC lathes and 3D CMM Wenzel

### Year 2011-12

Implementation of the complex manufacturing system with the bar code support, innovations in manufacturing processes

### Year 2013

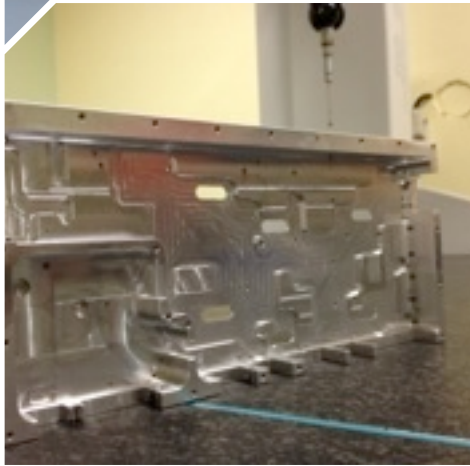
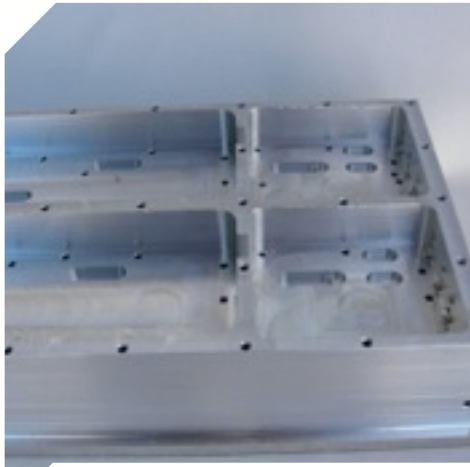
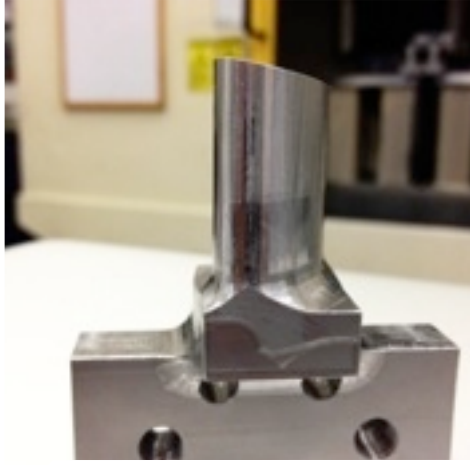
We prepare the purchase of the 2 new 5 axis machines from Quaser

CNC lathes	axis Nr.	features	turning diameter	turning length
BTF 550 TMS	8	2 spindles 2 turrets barfeeder	280 mm	290 mm
JSL 32 AB (swiss-type)	8	high productivity, barfeeder	32 mm	3000 mm
BTA 380 ML	3	high rigidity, c axis	400 mm	780 mm
Tornado T6M	3	c axis, barfeeder	215 mm	450 mm
Tornado T8	2		235 mm	540 mm
Tornado T4	2	barfeeder	170 mm	450 mm
Tornado T4	2	barfeeder	170 mm	450 mm
ALPHA 1350	2		350 mm	650 mm

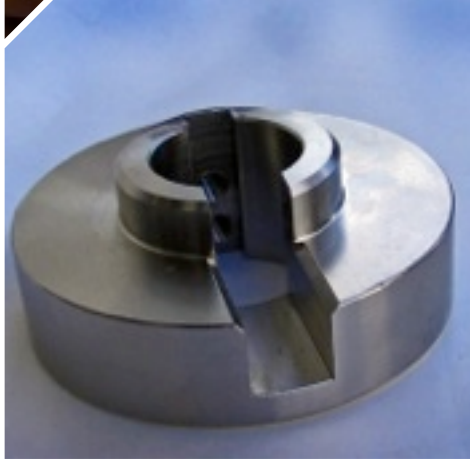
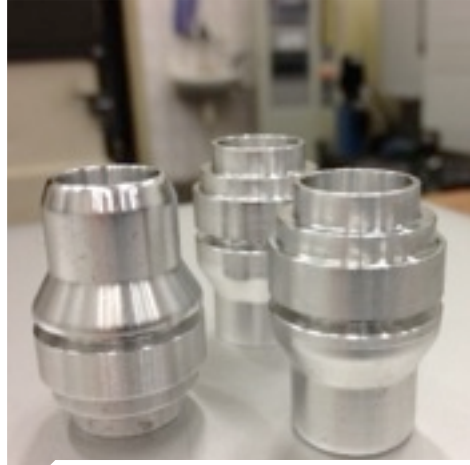
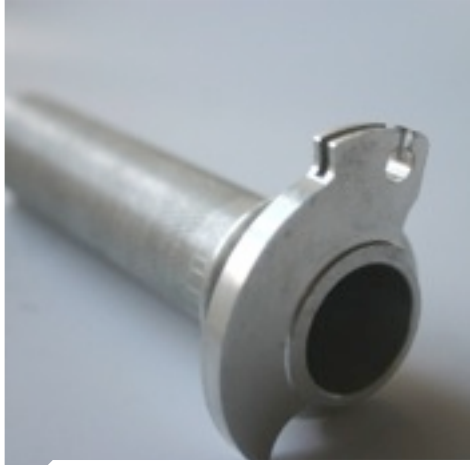
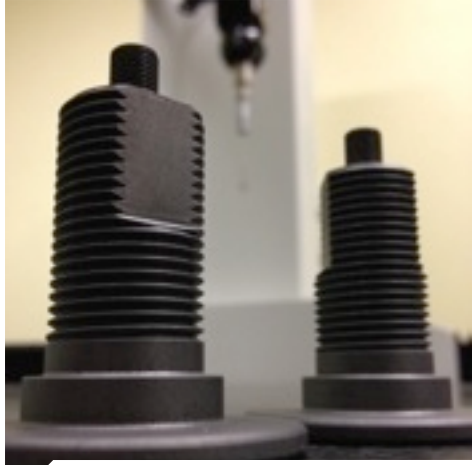


VMC's	spindle RPM	features	workpiece max. size
BSAC 5AX	15000	5 axis table 250mm rapids 48/48/48	dia. 320 x 300
BSAC 1100	12000	4 axis rapids 32/32/32	1250 x 610 x 510
BSAC 610	12000	rapids 32/32/32	750 x 420 x 350
Robodrill T21i	10000	rapids 54/54/54	850 x 410 x 250
Topper 510	10000	2 tables rapids 40/40/40	600 x 360 x 200











Looking forward to work  
with you!

**BOST SK, a.s.**

Súvoz 1/1594  
Trenčín, Slovakia, 91101

**Head of Division, intl. sales**

Ing. Michal Mosný, mosny@bost.sk  
+421 907 713 202

**Sales in German speaking  
countries**

PhDr. Ladislav Čechvala, Csc  
+421 903 211 754, cechvala@bost.sk

**Logistics, purchase, invoicing**

Katarína Siváková, sivakova@bost.sk  
+421 918 883 773

**Quality control**

Ing. Jozef Durdík, durdik@bost.sk  
+421 905 702 401

**Web**

[www.bost.sk](http://www.bost.sk)

